

Avest Company Limited

ALWAYS AT THE
FOREFRONT
OF TECHNOLOGY

52 Lat Krabang Industrial Estate,
Soi Chalongsong 31 Chalongsong Rd.,
Lumplatew, Lat Krabang,
Bangkok 10520, Thailand.
Tel. 02-739-6277-8

Website: www.avestthai.com

Email: sales@avestthai.com



STOCK & SALES.

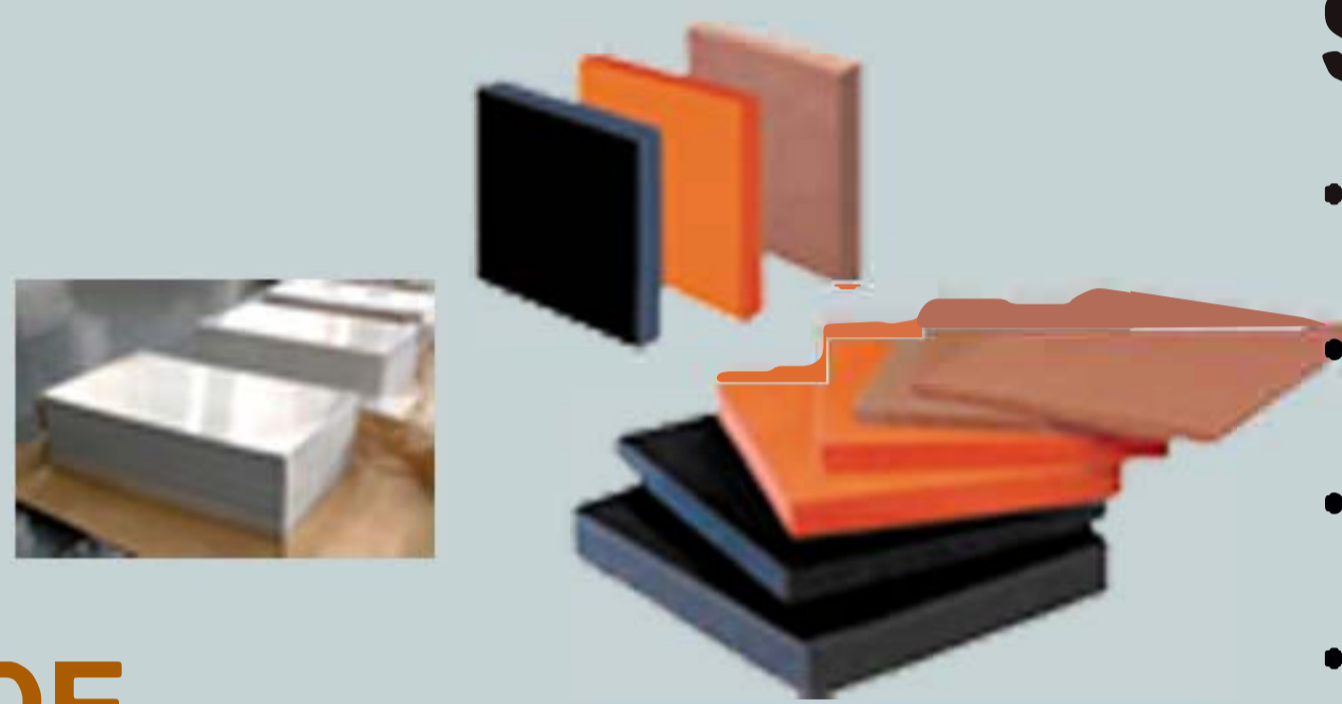
- a) Consumable material for PCB.
- b) Spare parts.
- c) Supplies for clean room.

CONSUMABLE MATERIAL AND SPARE PART FOR PCB. SUBPLATE(BAKELITE)

For Routing/Drilling machine.

Aluminum entry Backup board.

- Phenolic Backup.
- Wood Backup.



SAW/ V-CUT BLADE

For cutting laminated / backup board

Prepreg/Entry board/

Edge beveling / Knife

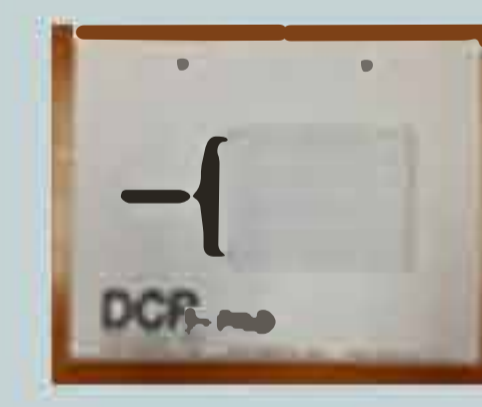
Round corner / V-score



ADHESIVE ROLLER, HAND CLEAN ROLLER, ADHESIVE PAD AND STICKY MAT.

Application for:

- PCB Cleaning.
- PCB Cleaning with cleaning machine.
- Cleanroom usage.

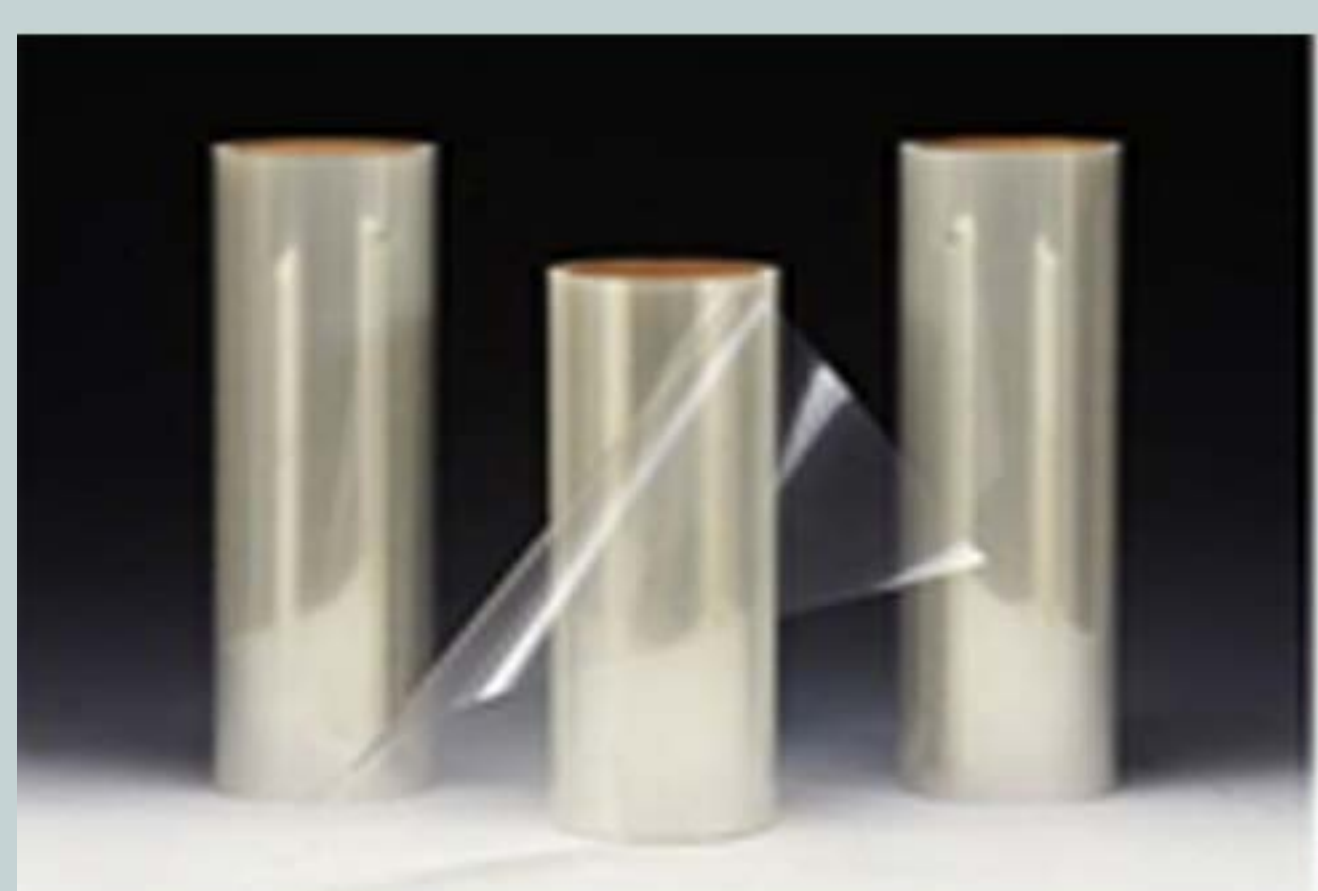


CLEAN ROOM WIPER

& other clean room product.



PROTECTIVE FILM. (Japan and China Supply) Film Protection for Laser Plotting Film.



SILVER HALIDE FILM.

for Laser Plotter



DRILL BIT.

For Drilling

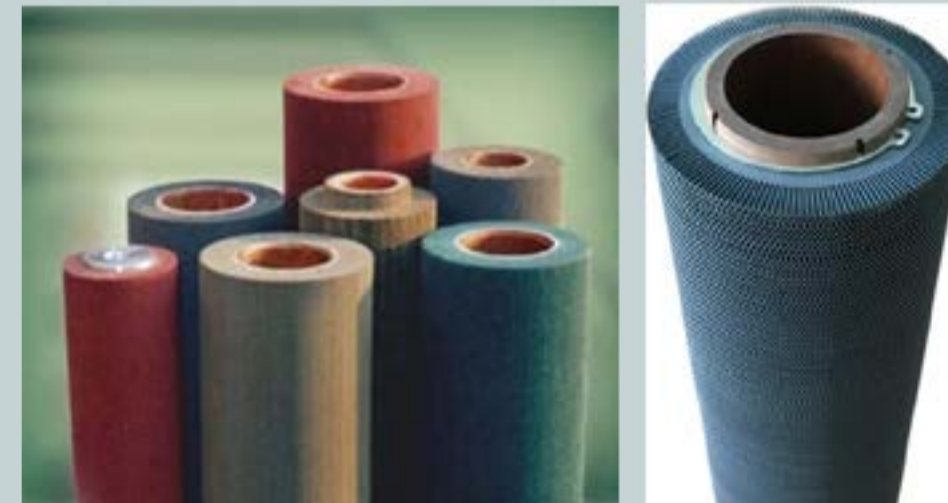
- Straight type (Φ0.60mm-Φ6.50mm);
- Under cut type (Φ0.10mm-Φ0.50mm)
- Other design.



BRUSHES.

Application: DEBURRING / SCRUBBING.

- SCOTCH BRITE
- BRISTLE BRUSH
- NYLON BRUSH /
- PUMICE BRUSH
- CERAMIC BRUSH
- HF BRUSH
- HD BRISTLE BRUSH



SILICONE HOT ROLLER, LAMINATING ROLLER AND ROLLER RECOATING SERVICE.

- For cut sheet laminator
- Dry film process
- Protection film
- Laminator and other.



COLLIMATE UV LAMP, MERCURY, METAL HALIDE UV LAMP, CAPILLARY LAMP.

For Exposure Machine

- Inner layer process
- Outer layer process
- Solder resist
- UV Curing

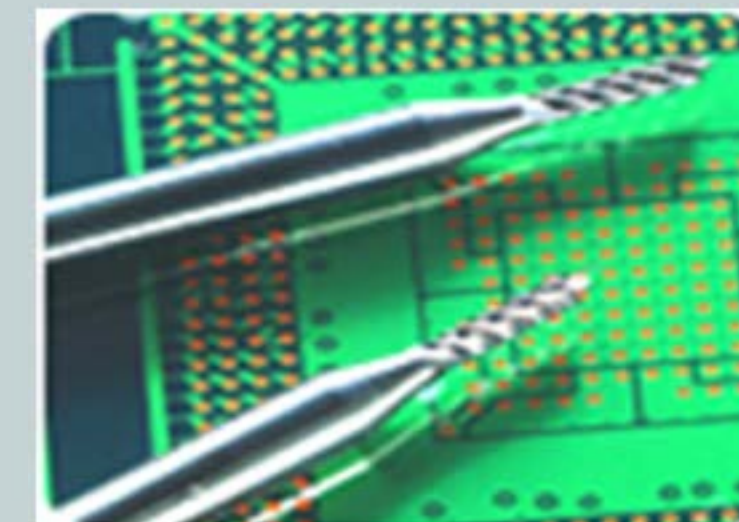


EXPOSURE GLASS.

For Exposure Machine



ROUTER BIT For Routing Diamond cut/ CHIPBREAKER (Φ0.70mm Φ3.175mm);



SPONGE ROLLER.

Application: Water Removal after Rinsing Process.

- PVA
- PU
- PVC
- PP
- PO



FR-4/ESD FR-4/ COMPLEX STONE/ THERMAPLATE. (ESD, HIGH TEMP.) : GLASS EPOXY LAMINATE.

FOR JIG / FIXTURE/ CARRIER

SOLDER FRAMES, TEST FIXTURES, CIRCUIT BOARD HOLDERS, TEST BOARD BAKELITE / ESD-BAKELITE ACRYLIC / ESD-ACRYLIC : IN CIRCUIT TEST (ICT) & AUTOMATIC TEST EQUIPMENT (ATE) FRAMES & FIXTURES.



PROBE : PIN TEST, CABLE (CONNECTOR). FIXTURE ACCESSORY

- TOOLING PIN.
- STACK PIN.
- COLLAR RING
- STACKING TAPE.
- NYLON BRUSH. (For Cleaning Fiber After Routing).



- KAPTON TAPE.
- MACHINE CONSUMABLE SPARE PARTS.
- OTHER ACCESSORIES.

